

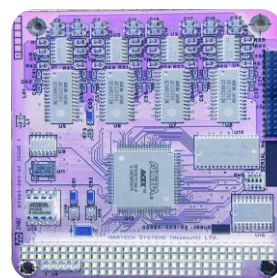
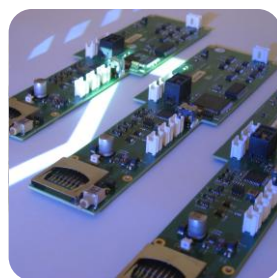
Martech, part of the CodaOctopus Group, is a team of **innovators, engineers & technologists** with extensive expertise in **electronics, software** and **mechanical** design and manufacturing.

Focused on customer satisfaction and **technical excellence**, your engineering problems are our challenges. As a team, we strive to not only work to your technical requirements, but to appreciate the overall objectives and needs to ensure we understand the **bigger picture**, and deliver the best possible solution.

Robust technology for demanding applications in defence, aerospace & subsea

With roots in **defence**, Martech also works with clients in the **aerospace, nuclear power, medical, pharmaceutical, and subsea** industries, where design integrity, reliability and robustness are a common thread in 'mission critical' applications. Since 1988, Martech's success has been built upon a reputation for **quality and reliability** together with a flair for delivering the right solution to the problem. Combined with our manufacturing facility, Martech is ideally equipped to meet the demands of our technology driven customers.

- ✓ **Digital and analogue design; FPGA, microcontroller & DSP**
- ✓ **Analogue and sonar signal processing**
- ✓ **Embedded software, C++, Visual Basic, & LabView**
- ✓ **Mechanical design; 3D & 2D CAD and automation**
- ✓ **System integration**
- ✓ **Documentation and drawings**
- ✓ **PCB design and manufacture inc. surface mount**
- ✓ **Assembly, wiring and test**
- ✓ **Fault diagnosis, repair, rework, maintenance and field service**



Special Test Equipment

Production line, field-portable and laboratory test solutions

Control & Instrumentation

Custom designed and off-the-shelf hardware & software implementations

Product Design & Manufacture

Developed, built and supported on clients' behalf, shipped direct to end users

Prototyping

Concept demonstrators and first-offs from initial ideas and sketches

Reverse Engineering

Redesign and obsolescence support from minimal information

Value-Added Build to Print

Manufacturing to existing designs, in volumes of one or more, with optional testing and problem solving utilising extensive on-site engineering resources

Field-Service & Support

Engineering support for trials, service, repairs and installations

innovators, engineers, technologists